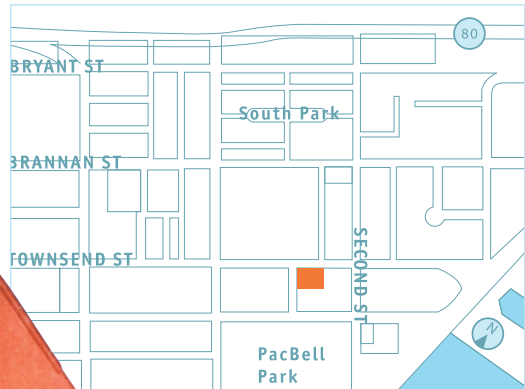


# 139

## Townsend

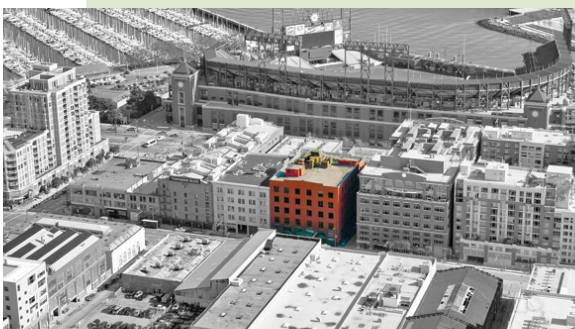
acquired JANUARY 1997  
sold AUGUST 2005



### 139 Townsend Street is located on the south side

of Townsend Street between 2nd

and 3rd Streets in San Francisco. The Property is situated in the heart of SOMA in an area known as Multimedia Gulch. The Property is comprised of a five-story plus mezzanine timber frame with a brick facade. The 57,000 square foot office building was originally built in 1909 and completely renovated in 1984. The office building is situated on a site of approximately .34 acres.



SKS value-added activities for this asset included: Market re-positioning, substantive physical/mechanical upgrades, leasing and asset management.